

# Attic Cabins



Weekenders,  
Studios, Bungalows,  
Granny Flats,  
Bed & Breakfast  
and Cottages.

Enjoy a better lifestyle!

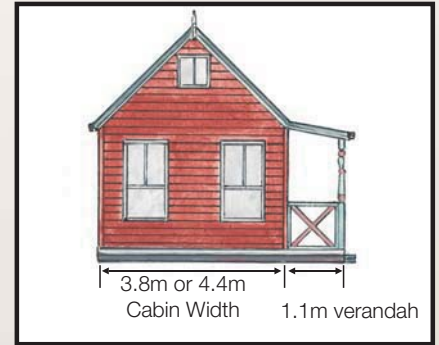


# Attic Cabins are ideal for Weekenders, Bed & Breakfast

Have you run out of space at home or want a stylish self contained cabin to spend your weekends at, or offer Bed & Breakfast retreats for extra income? Maybe you need an extra bedroom, office or studio in your backyard. These beautifully crafted cabins will transform your property, creating a picturesque relaxing atmosphere for every application. Available in 2 Cabin widths (3.8m & 4.4m) and an attractive verandah with turned verandah posts, decorative corner brackets and stylish railing.



Real Estate Office: 8.4 x 3.8 with 1.1 verandah



Jim River: 9.6 x 3.8

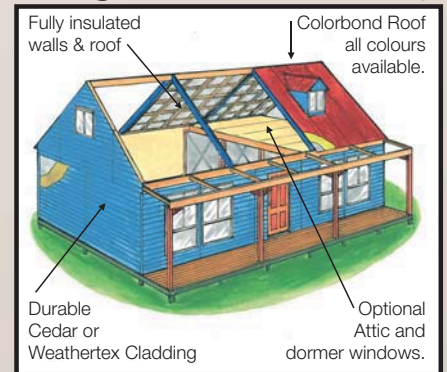
Australia's heritage is reflected in these Attic Cabins and a certificate of authenticity is issued on completion. Reminiscent of the outback Bush Cabins, we have reproduced them in unique modular panels with modern durable building materials.

Incorporating Protectafoil.  
(Insulating moisture barrier behind weatherboards)

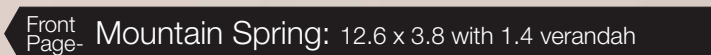


## Engineered for strength and versatility

Designed to maximise space with the 45° clear span roof. An integrated Attic with Dormer windows can be added to provide extra space. Simple construction with engineered strength.



Chestnut: 8.4 x 4.4 with 1.4 verandah (Bed & Breakfast)



Front Page- Mountain Spring: 12.6 x 3.8 with 1.4 verandah

## Why Choose Attic Cabins?

- Registered Builder
- 5 Star energy efficient design
- 6 Year Warranty - to protect your investment



Bronco: 9.6 x 4.4 with 1.4 verandah (Weekender)

# Interiors

Looking up to Attic from living room.



Viewing living area & kitchen from Attic.



Coffee Shop in Emerald, Victoria.



Bedroom with Attic above.



Restaurant with Attic above.



## Versatile, Practical & Uniquely Designed!

The interior of these Cabins lends itself to creating a secluded haven with a touch of class. Choose your own colour schemes, feature walls, furnishings and floor coverings to add your individual touch to these beautifully crafted Attic Cabins. The cathedral ceiling with optional Attic allows you to utilise the roof space at minimal extra cost. An oasis away from the rush of everyday life is yours if you want it!

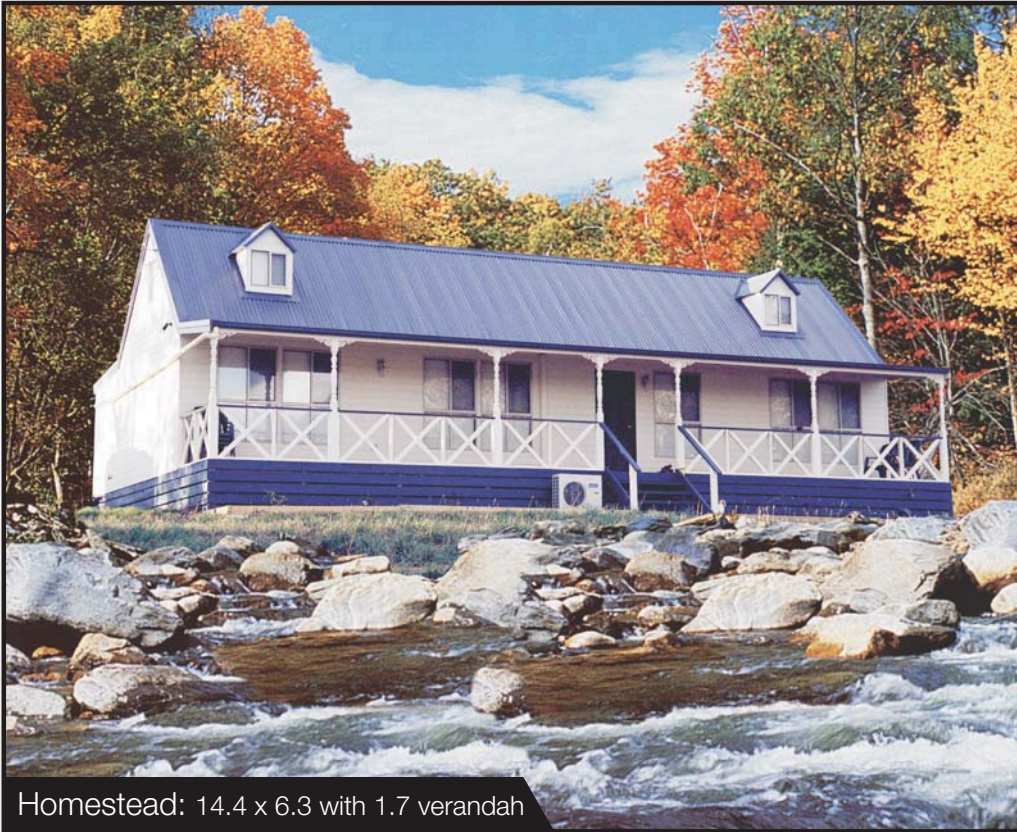
## Enjoy a better lifestyle!

Kitchen.



# Studios, Shops, Granny Flats and Cottages

Not enough room in our standard Attic Cabin width? ...just add a "Rear Annexe"!



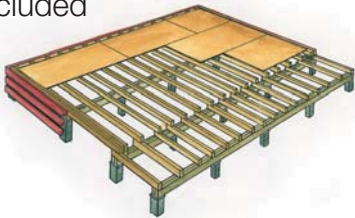
Homestead: 14.4 x 6.3 with 1.7 verandah



Like the original "Miners Cottage" this extra space allows for larger floor plans. Standard Annexe width is 1.9m, but may be enlarged to 2.3 wide if required. Add the optional Attic and your space is optimised to maximum advantage.



Fast Installation - all hardware & step by step instructions included



Day 1-2: Sub Floor

Transform the appearance of your Attic Cabin with Dormer Windows and bath the area in a pool of natural light. (See right)

## Fast Installation:

Our cabin kits are installed fast & hassle free due to the pre-made modular panels with pre-fitted windows and weatherboard cladding already attached. Installation is far quicker than standard Kit Homes which are just a pile of building materials. Our Kits are ½ finished before you start. Alternatively, we offer "Built to Lock-up" or "Built to Completion". All plans, permits and hassles are taken care of. You just sit back, relax and enjoy!



Day 3: Walls



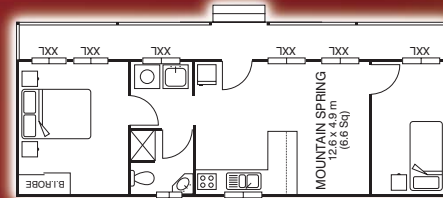
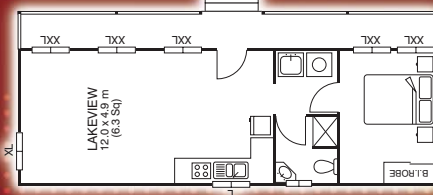
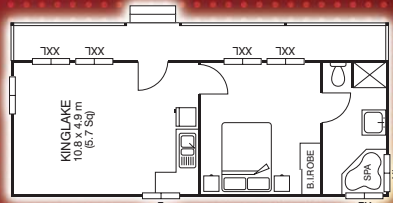
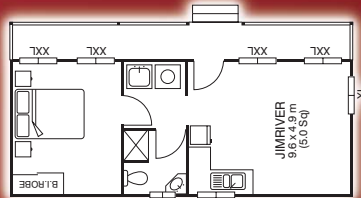
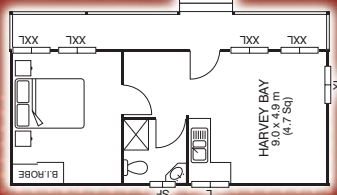
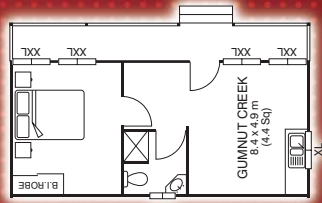
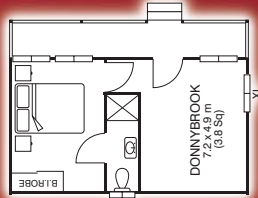
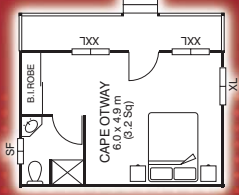
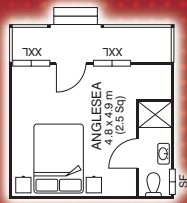
Day 4-5: Roof & Verandah



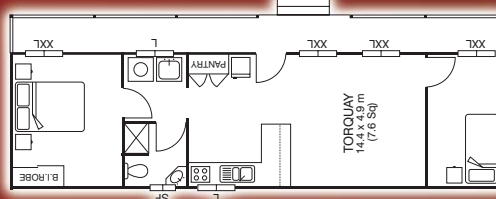
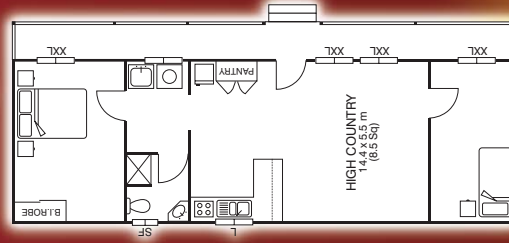
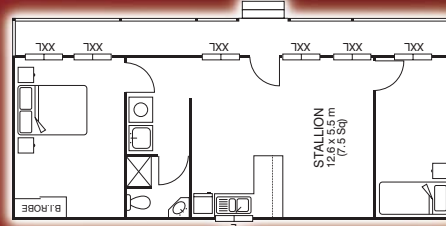
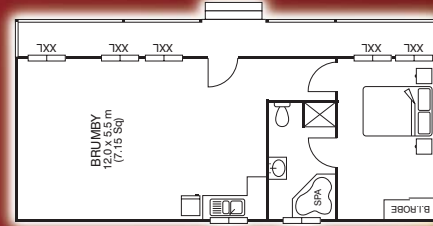
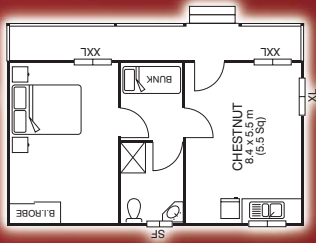
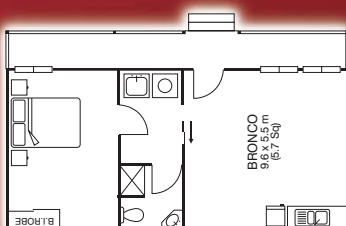
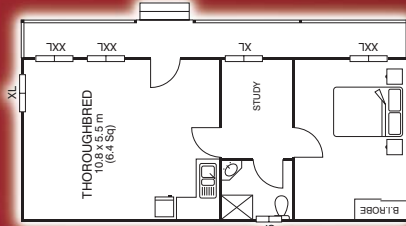
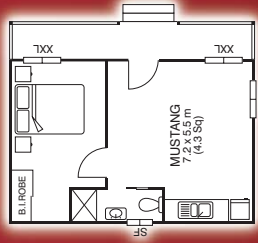
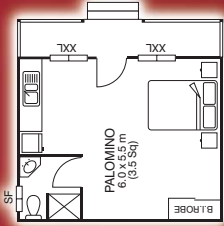
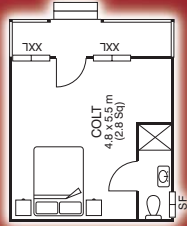
Stockman: 13.2 x 6.3 with 1.4 verandah

# Cottage Series

3.8 Wide with 1.1 Verandah

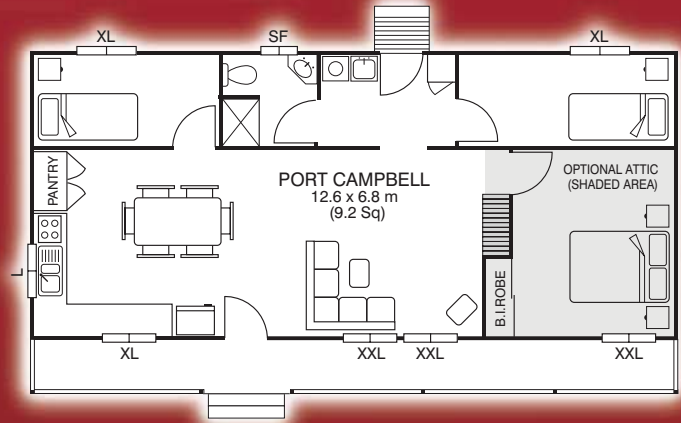
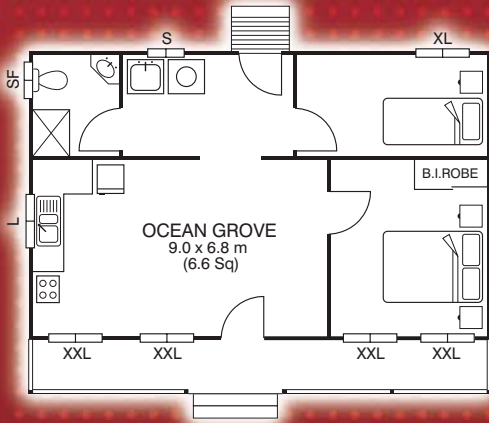


4.4 Wide with 1.1 Verandah

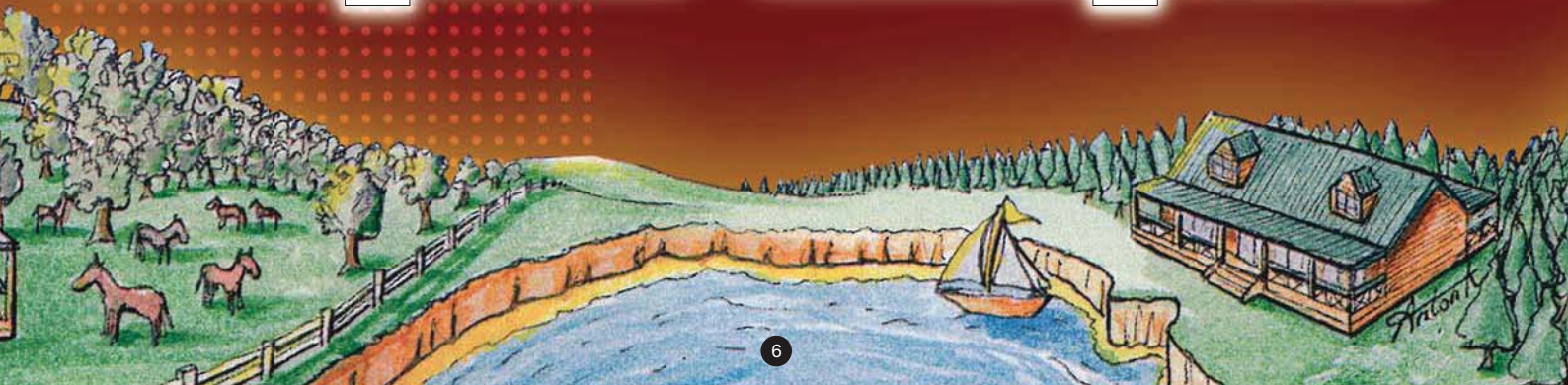
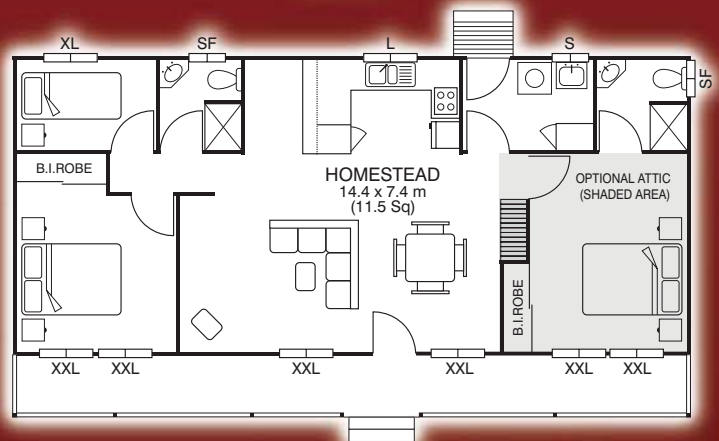
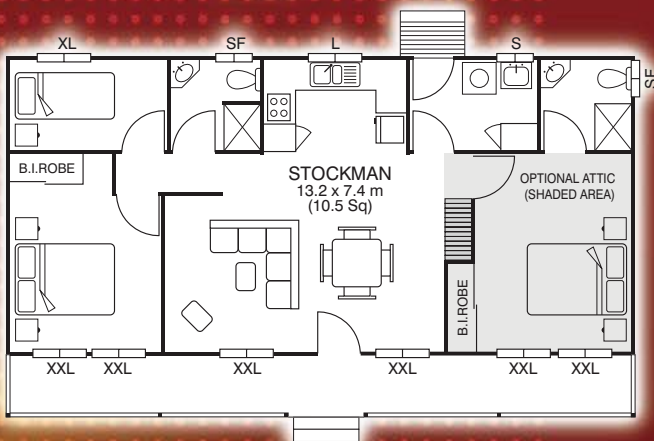
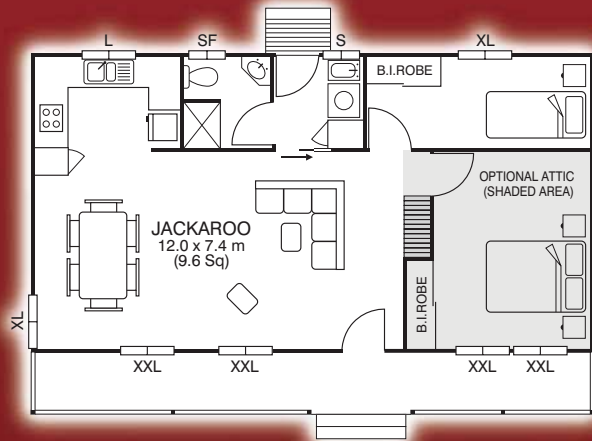
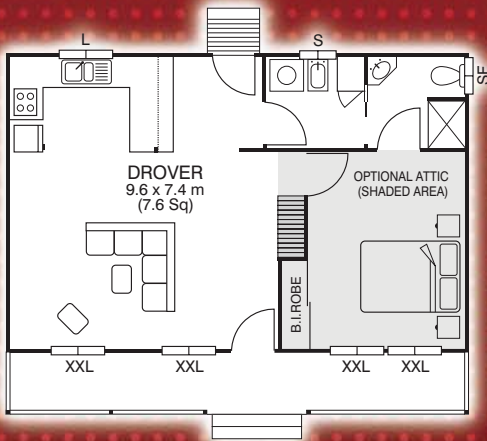




# 3.8 Wide with 1.9 Annexe & 1.1 Verandah



# 4.4 Wide with 1.9 Annexe & 1.1 Verandah



# All Our Cabins are Available in 3 Separate Stages.

**1** Lock Up Kit  
Modular Pre-Made Panels  
(Not including lining)

**2** Built to Lock Up- (See right)  
Exterior Complete - Framing Stage  
Inside (Not including lining or services)



**3** Built to Completion  
Including Kitchen & Bathroom  
(Customer to arrange painting, tiling & floor covering)

Cabin Lengths		Cabin Widths		
3.6		3.8		
4.8		4.4		
5.4				
6.0				
7.2				
8.4				
9.0				
9.6				
10.8				
12.0				
12.6				
13.2				
14.4				
		Annexe Widths		
		1.9		
		2.3		
			Verandah Widths	
			1.1	
			1.4	
			1.7	

## Cabin Widths

- 3.8 Wide provides 1.7m clearance above Attic floor.
- 4.4 Wide provides 2.0m clearance above Attic floor

We can also offer taller external walls to provide a higher clearance in Attic space

## Verandahs - available on front & rear

- 3 optional widths 1.1m, 1.4m or 1.7m.
- Verandah railings are available in standard cross braced style or optional vertical pickets. (Specify when ordering)

## Annexe - available on all cabins

- Standard width of Annexe is 1.9m
- Optional wider width Annexe 2.3m

*We arrange delivery to almost anywhere!*



## Features:

### External Cladding

- A) Durable Cedar Weatherboards
- B) Weathertex Millwood architectural cladding.

### Lining options

- Plaster walls & ceilings
  - V joint pine - ply lining
  - Polyester washable wall lining
- (Available in white, beige, or oak wood grain)



**A**

### Doors

- Kookaburra Glass panel entrance door (pictured)
- Internal doors 4 panel - Oakfield



### Roof - Corrugated Colourbond

- All Colorbond™ colours available

### Windows - can be added to any layout!

- Cream Aluminium sliding. SF-650X700 Frosted L-650X1130w, XL 975X1040w, XXL 1650X1040w

### Cedacote stain

- Exterior stain to protect & enhance Cedar.
- Decking stain also available.



## Options:

- Glass sliding aluminium doors available as additional doors or to replace the standard entrance door - Sliding security or flyscreen door available in matching colour

- Kitchens Can be varied to suit requirements Huge colour range

- Optional pantry or linen cupboard

- Timber Windows Cedar awning or double hung - Double glazed also available

- Colonial bars on aluminium or timber windows



- Cement Sheet moulded Weatherboards (fire rated areas)

**C**

- Verandahs - can be added at rear or end of cabin

- Bathrooms can be added to existing plans or altered to include a bath / spa

- Solid timber floorboards - available in various species: pine, hardwood, or cypress

- Attic floors can be added to most floor plans with optional - Fold up Attic ladder - Fixed ladder - Permanent staircase

- Dormer Windows Add an attractive dormer to achieve - Unique appearance - Ventilation - Let the light shine in!



# Attic Cabins

Available from:  
**Classic Cabins**  
Display open Mon - Fri (9.00 – 4.00PM)  
360 Bayswater Rd, Bayswater Victoria 3153  
Fax: 03 9729 9531  
Ph: 1300 120 110